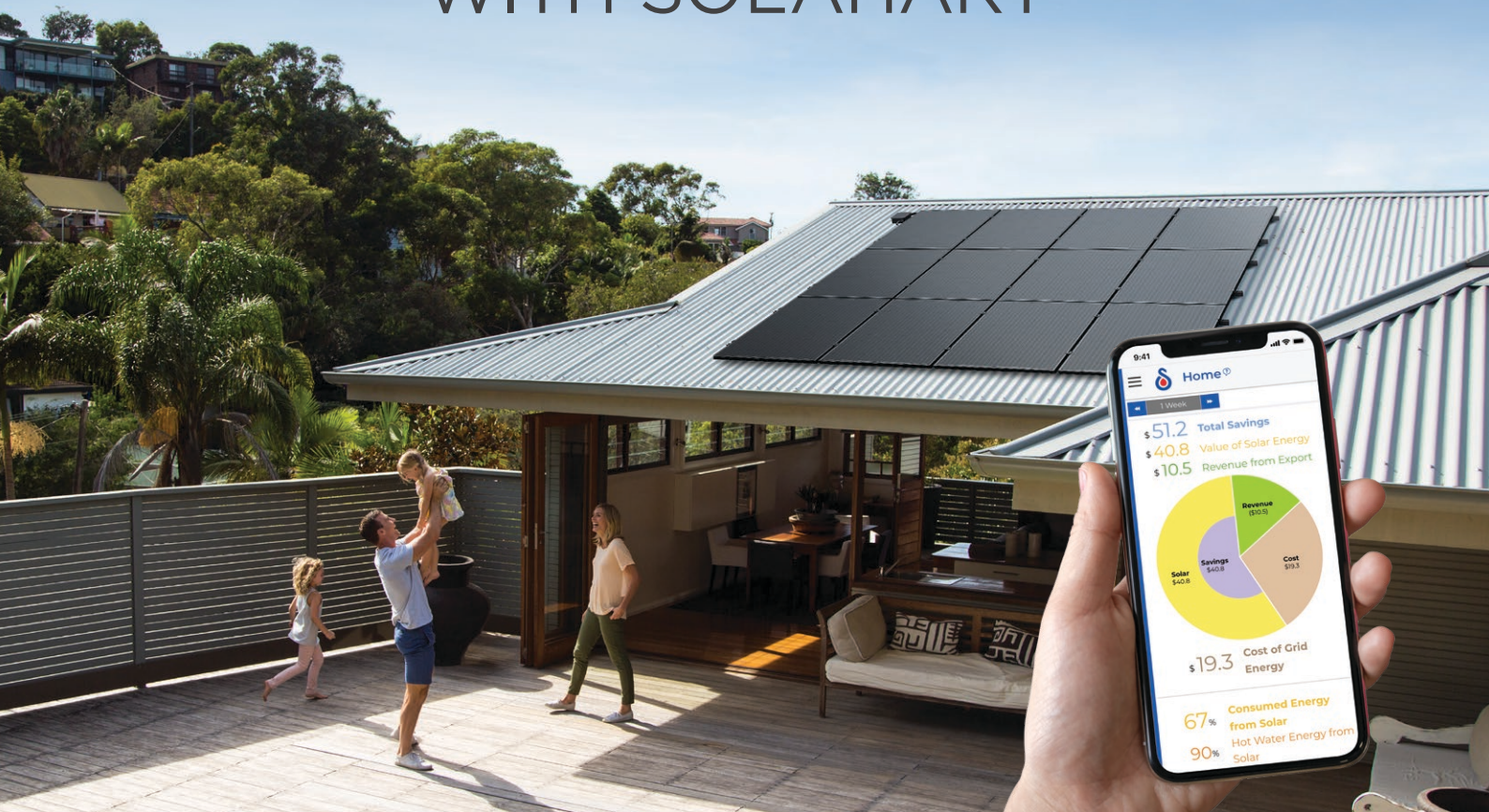




# MAKE YOUR HOME **EVEN SMARTER** WITH SOLAHART®





## WHAT IS A HEMS?

The Home Energy Management System (HEMS) controls your Connected Appliances\* to make the most of your solar and preferentially use the cheapest grid energy. The system uses weather forecast information and an understanding of your retail electricity plan to decide whether to power Connected Appliances from the grid or wait for solar power to become available.

HEMS lets you monitor the status and health of your Connected Appliances and keep track of where you are using energy and spending money.

### With a Solahart Home Energy Management System (HEMS) you can:

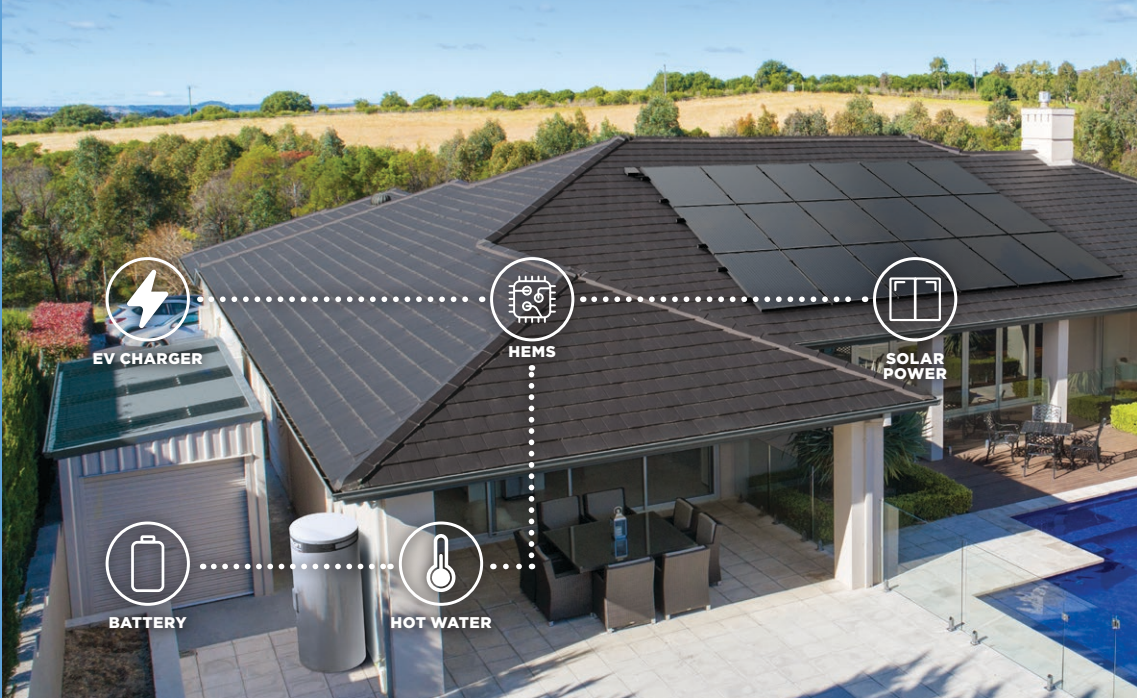
-  Bring your HEMS compatible devices, such as your solar power system, batteries and other Connected Appliances under one monitoring and control platform.
-  View your home's solar power system and Connected Appliances performance information via the AtHome web App.
-  Receive regular system updates as HEMS adapts to changes in the energy market.
-  Help reduce your home's energy costs by shifting high energy consumption Connected Appliances to off-peak electricity times or when there is excess solar energy.
-  Get automatic fault alerts from Connected Appliances (solar power systems, batteries, EV chargers).
-  HEMS optimises your Connected Appliances by using weather patterns, machine learning from your Connected Appliances and your energy retail plan. (This is only available with the Combined Energy HEMS plan.)

# The smart new way to manage your energy

Adding a Solahart Home Energy Management System (HEMS) to a compatible Solahart system is a smart way to monitor your home's solar power generation and energy consumption. You can view this via the Solahart atHome web App.



Monitor and control your home's Connected Appliances



## GET SOLAHART HEMS MONITORING FOR 12 MONTHS

Add a Solahart HEMS, provided by our partner Combined Energy, with the first year HEMS plan included. After the first year, you can choose to pay an ongoing monthly subscription for HEMS, or revert to the Basic Monitoring plan at no additional cost.



Features	Combined Energy Plans	
	Basic Monitoring	HEMS
Divert excess solar energy to Connected Appliances	✓	✓
HEMS Optimisation of Connected Appliances Based on weather forecasts, predicted solar production, usage patterns and your retail energy plan		✓
View your Energy Usage in real time	✓	✓
Health information for your Connected Appliances (Power, State of Charge, Fault Indications)	✓	✓
Proactive notification of problems with your Connected Appliances (Email notifications)		✓
Quick Controls for supported Connected Appliances	✓	✓
User Scheduling of supported Connected Appliances		✓
Maximum number of Connected Appliances	3	6 <sup>1</sup>
CSIP-AUS Dynamic Import / Export / Backstop Control of devices to manage import (e.g. EV chargers) and export/backstop (e.g. inverters)	1 Device	4 Devices <sup>1</sup>
Custom retail energy plan for cost analysis		✓
See where energy is being consumed in your home (Solar, Grid, Battery, EV, Appliances)	✓	✓
See what you are spending and what you are saving (Cost analysis based on your retail energy plan)		✓
View your historical Energy Usage (data interval)	30 minute	5 minute
Historical Energy Usage records	Up to 2 years	Up to 7 years
Monthly Subscription <sup>^</sup>	No Fee	\$5.50 (inc GST)

To find out more call **1300 769 475**  
or visit **[solahart.com.au](https://solahart.com.au)**

<sup>1</sup> Please contact CET for pricing if your site has more Connected Appliances / CSIP-AUS Devices <sup>\*</sup>Connected Appliances refers to appliances that allow control by the HEMS.  
<sup>\*</sup>Monthly subscription fees charged directly from Combined Energy Technologies Pty Ltd (CET). ABN 15 616 324 362. For more information on HEMS contact your local Solahart Dealer or CET contact@combined.energy. © Solahart Industries Pty Ltd (2025). All rights reserved. Solahart, the Solahart logo, Solahart energy free from the sun and Solahart PowerStore<sup>®</sup> are registered trade marks owned by Solahart Industries Pty Ltd in Australia. For a list of devices that are supported by Solahart HEMS please see [www.combined.energy/hems/supported-devices](https://www.combined.energy/hems/supported-devices) Information regarding the CET HEMS Terms of Service is accurate as at 1-Mar-2025 and is subject to change. Please refer to the Combined Energy HEMS Terms of Service at [www.combined.energy/hems/terms](https://www.combined.energy/hems/terms) for the latest terms.

